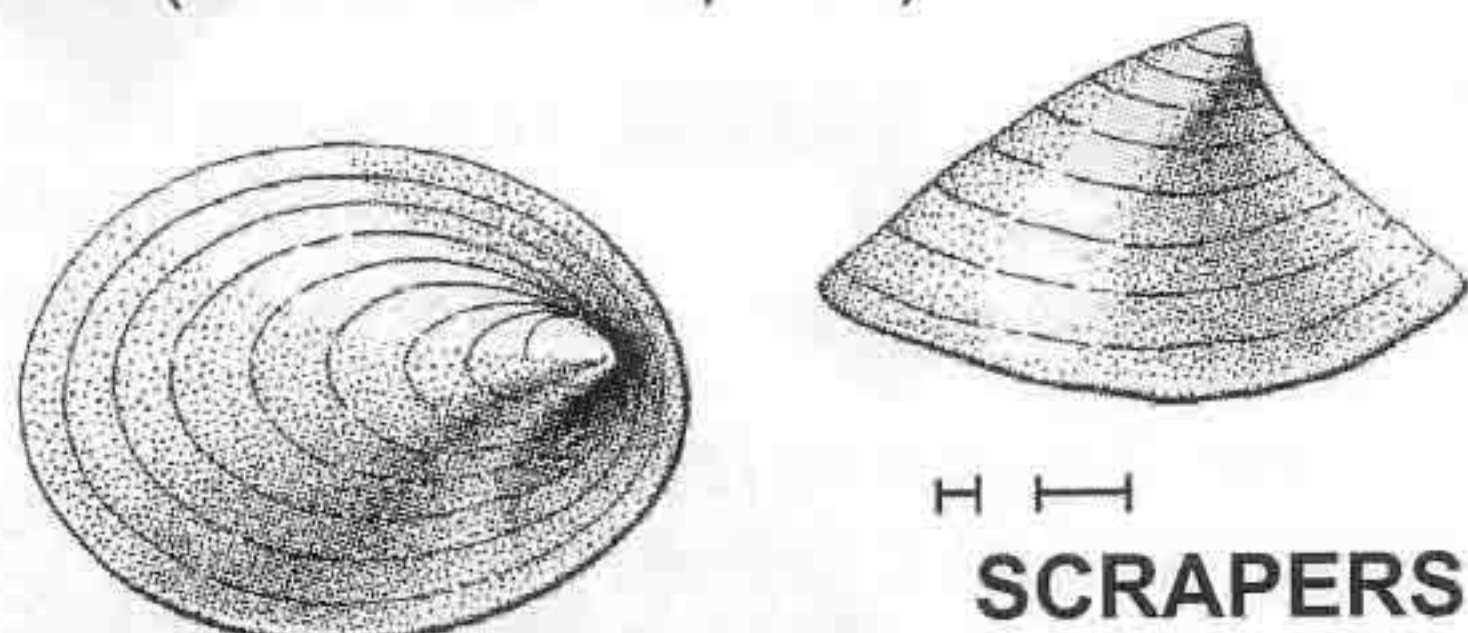


KEY TO FUNCTIONAL FEEDING GROUPS

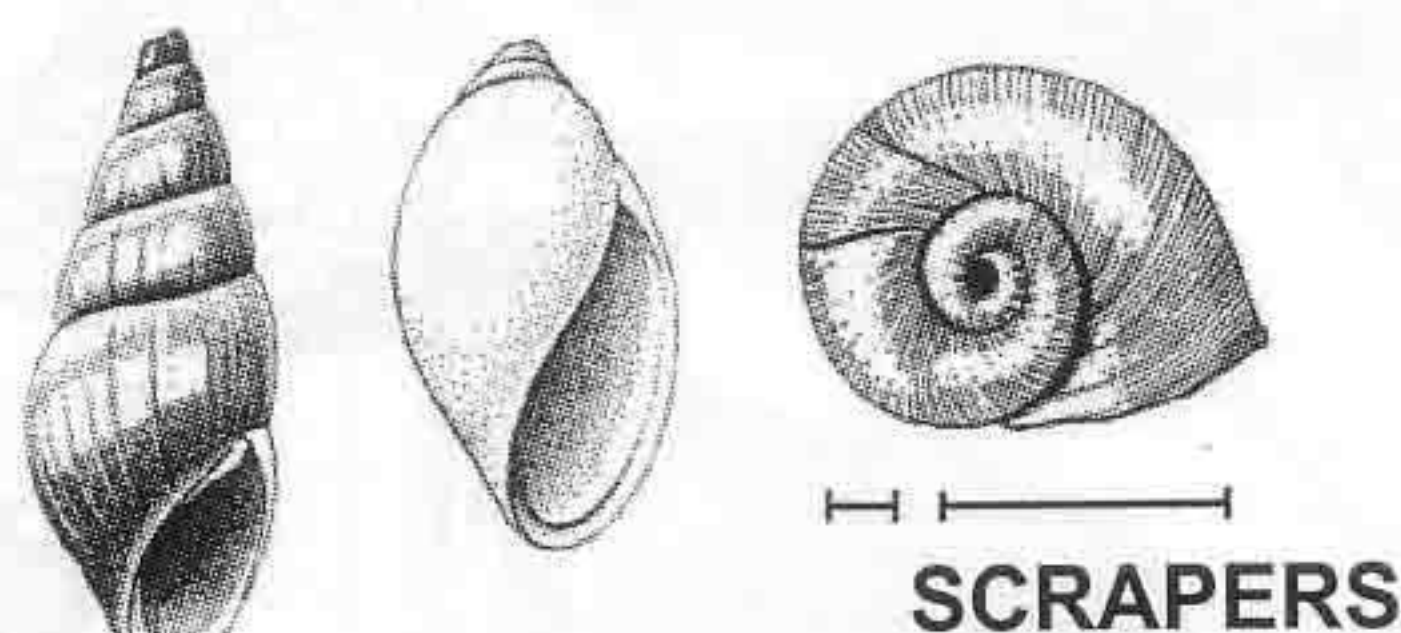
— Indicates size or range of sizes

1. ANIMALS IN HARD SHELL (Phylum Mollusca)

a. LIMPETS (Class Gastropoda)

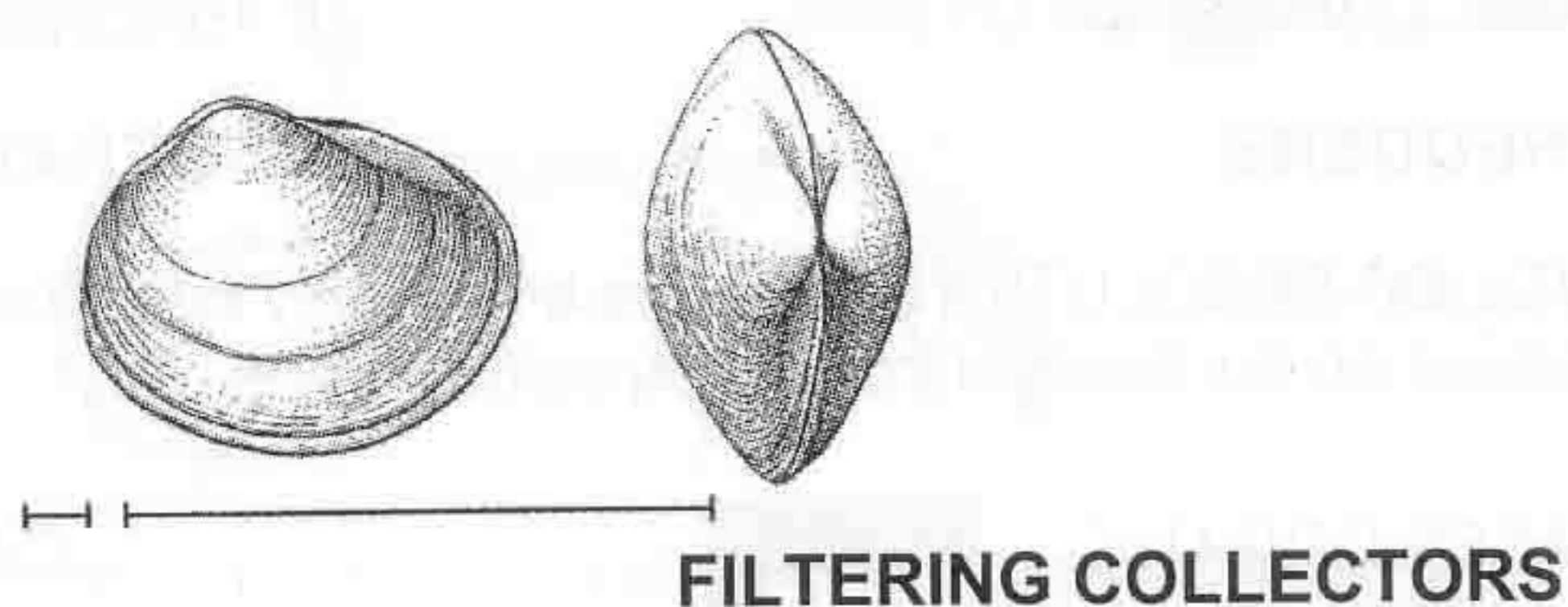


b. SNAILS (Class Gastropoda)

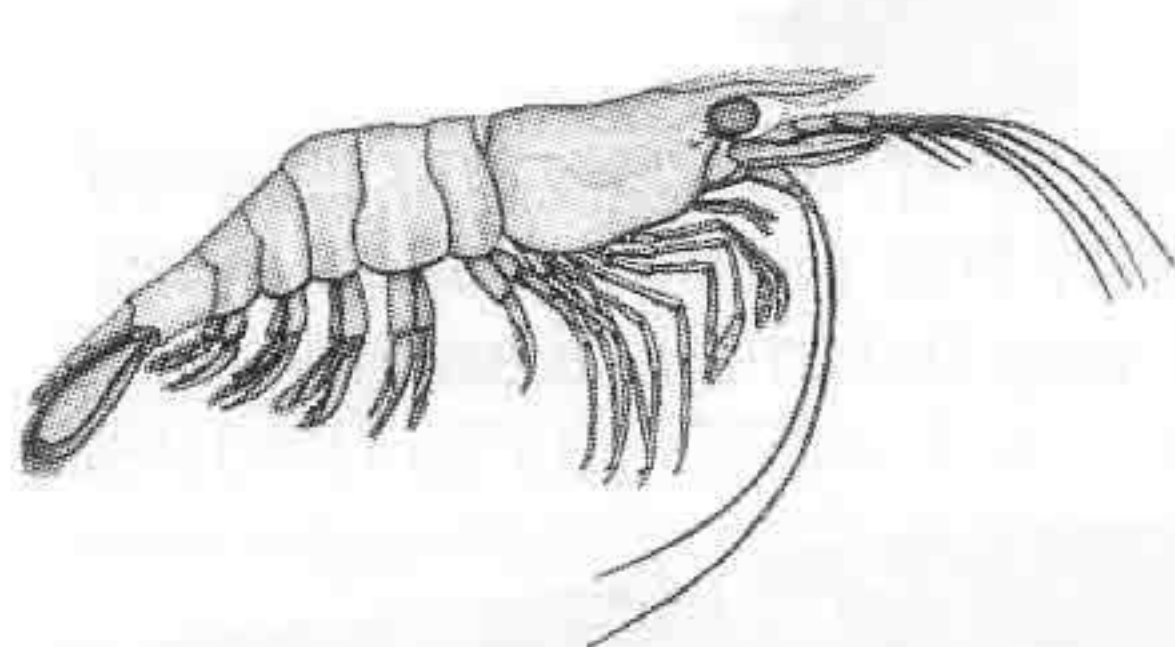


Snails are generalized (facultative) feeders and can also function as Shredders.

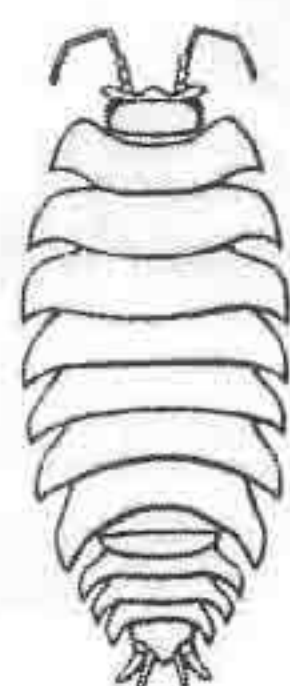
c. CLAMS OR MUSSELS (Class Pelecypoda)



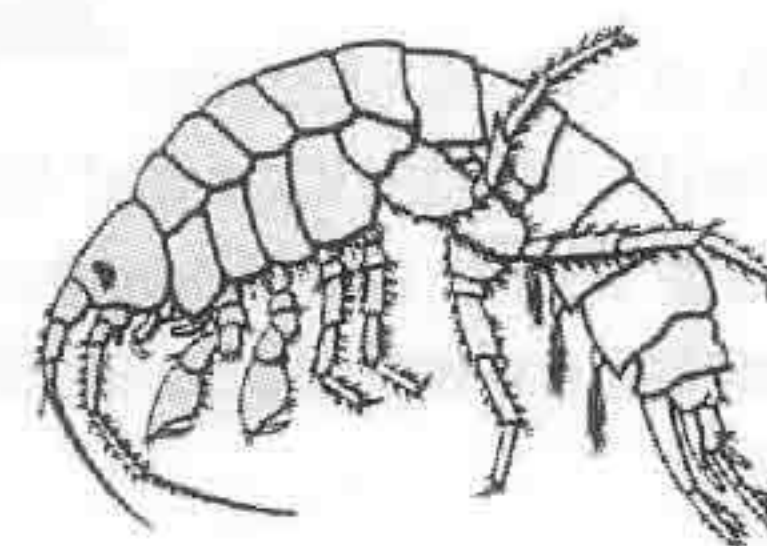
2. SHRIMPLIKE ANIMALS (Class Crustacea)



Decapoda



Isopoda



Amphipoda

SHREDDERS

Can also function as facultative Gathering Collectors.

3. LARVAE IN PORTABLE CASE OR "HOUSE"

Go to KEY 2

4. LARVAE IN FIXED RETREAT WITH CAPTURE NET

Go to KEY 3

Note: Care must be taken when collecting to observe nets.

5. WITHOUT CASE OR FIXED RETREAT

a. WORMLIKE LARVAE, WITHOUT JOINTED LEGS

Go to KEY 4

b. NYMPHS OR ADULTS WITH JOINTED LEGS

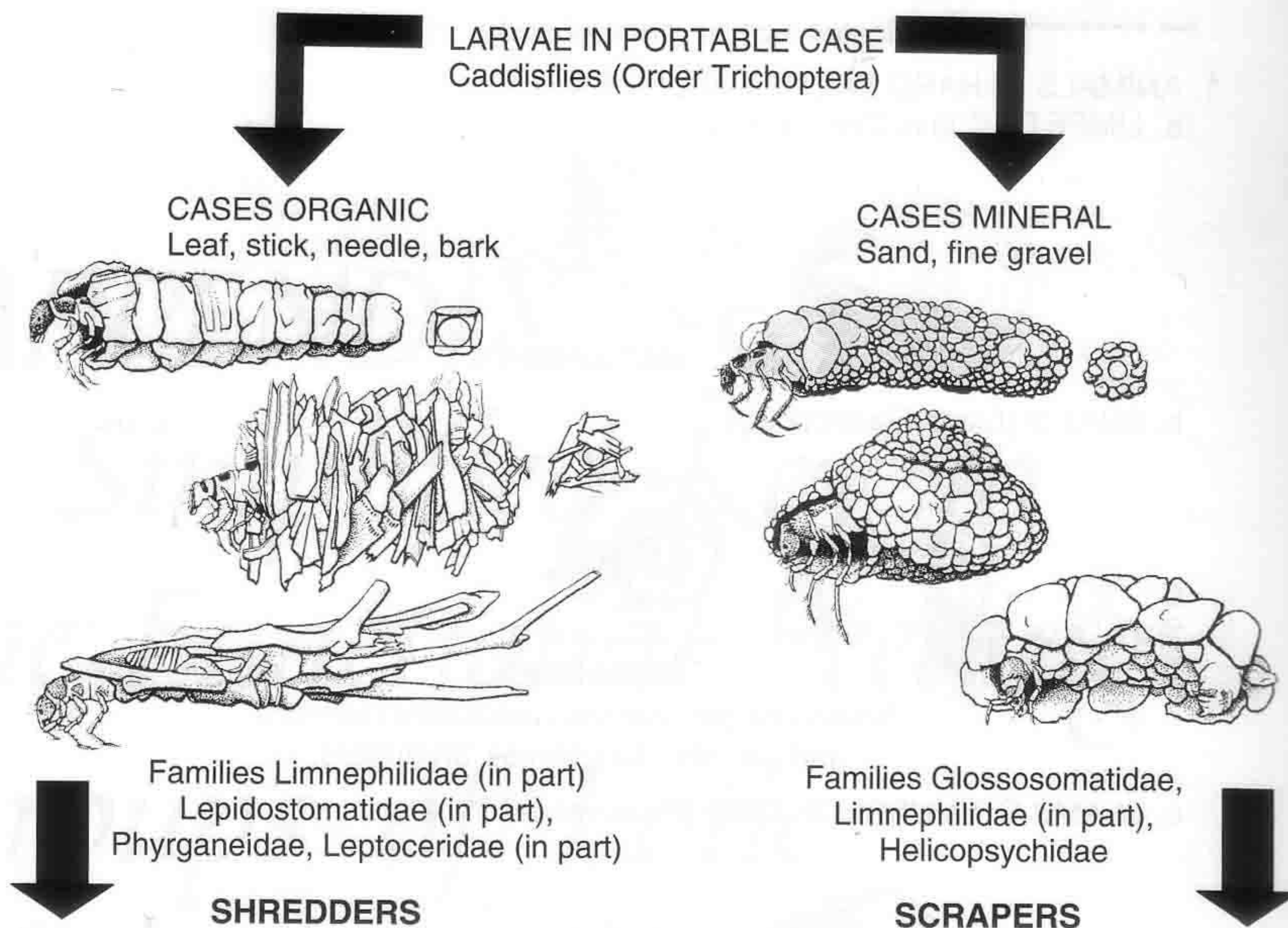
Go to KEY 5

6. DOES NOT FIT KEY 5 EXACTLY

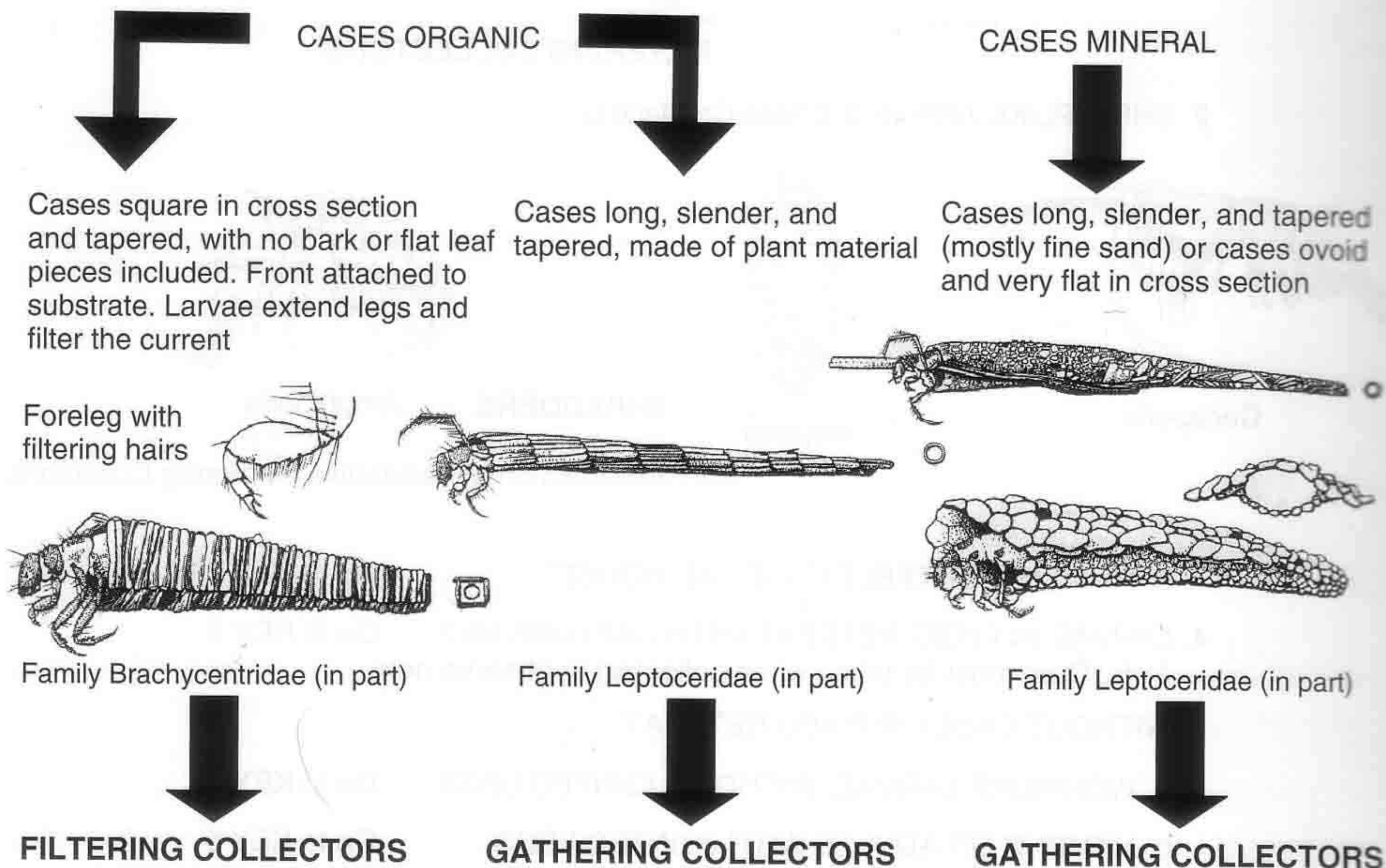
Go to KEY 6
or KEY 7

KEY 2

FIRST LEVEL OF RESOLUTION



SECOND LEVEL OF RESOLUTION considers a few fairly common caddisflies that would be misclassified above on the basis of case composition alone.



KEY 3

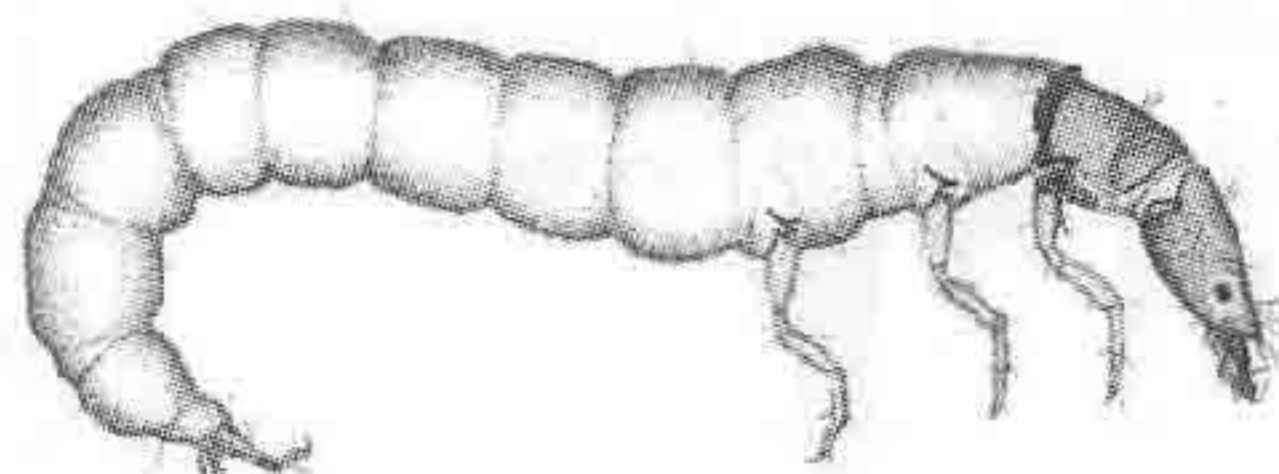
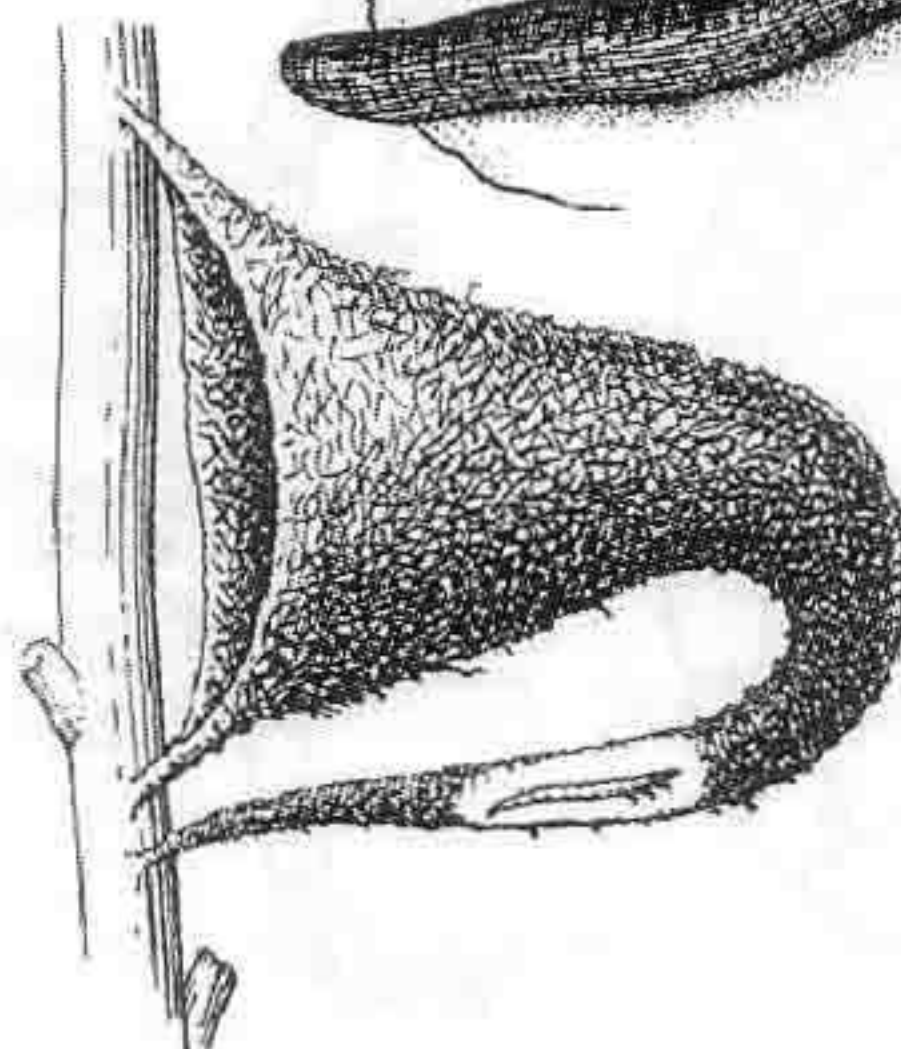
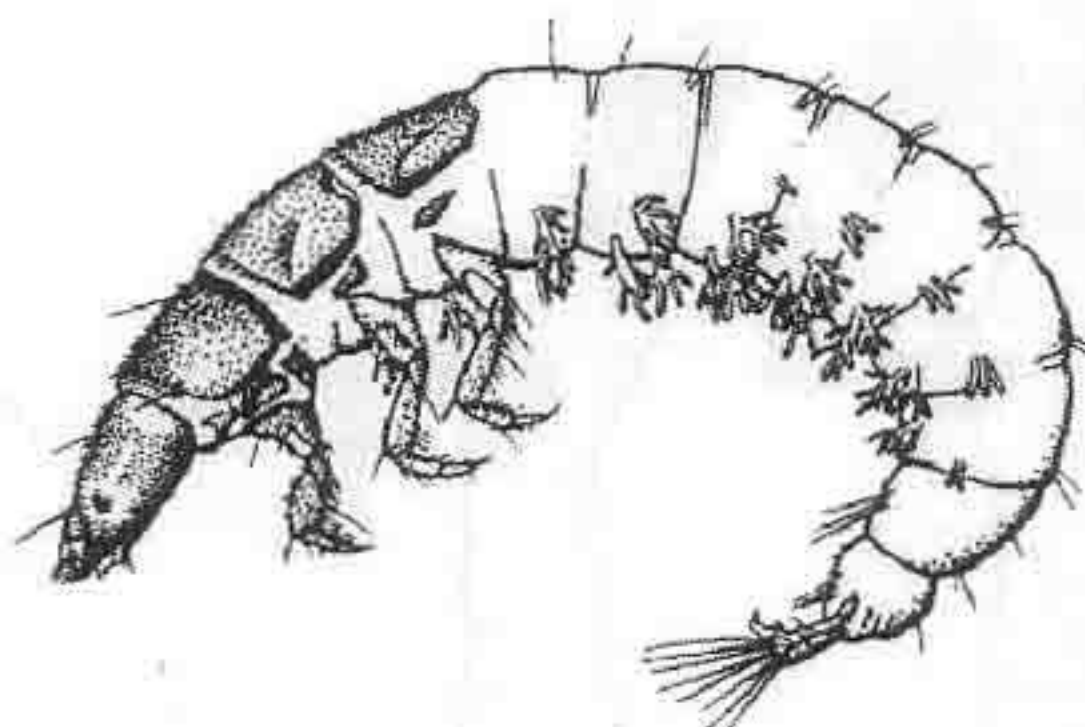
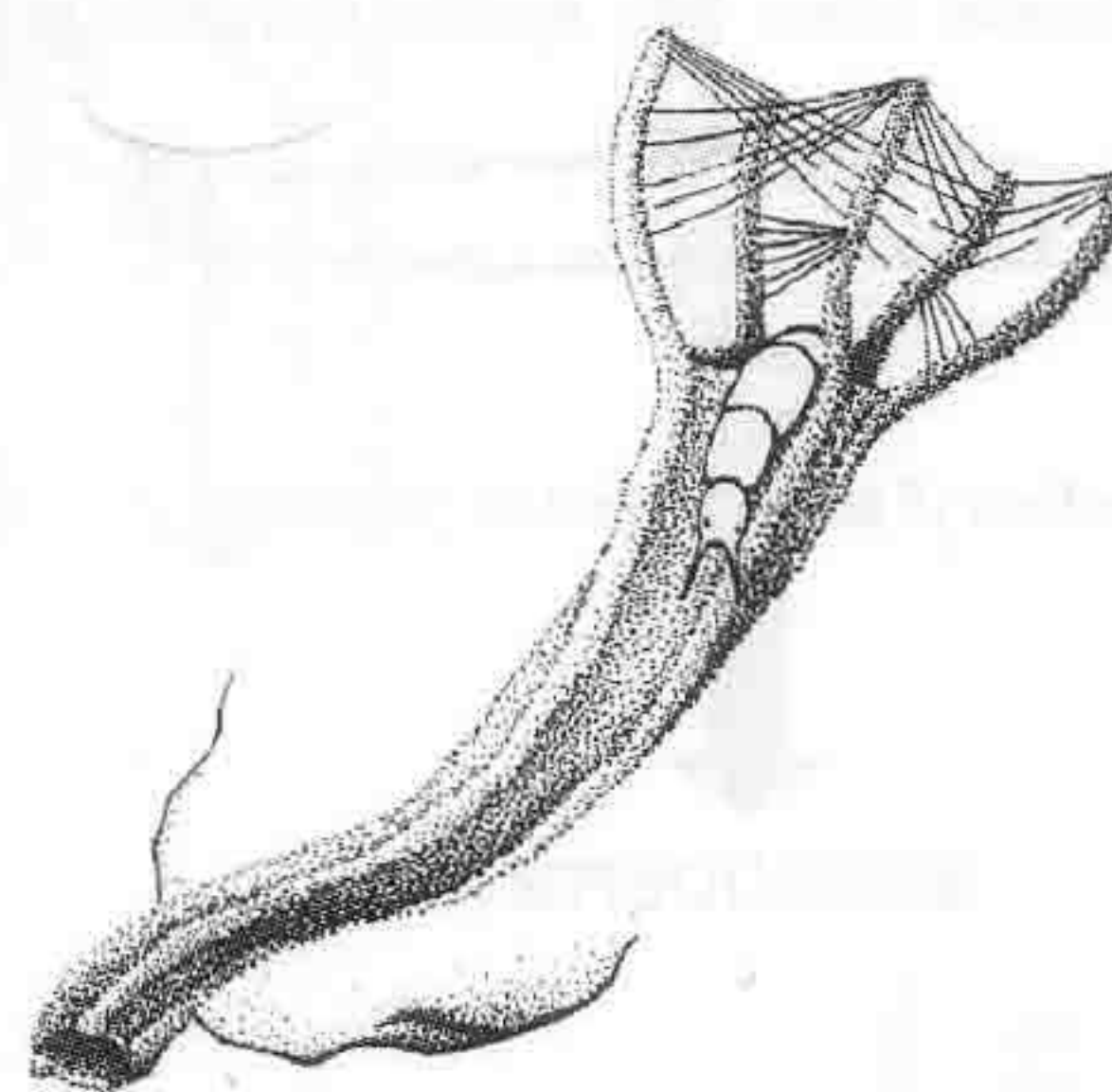
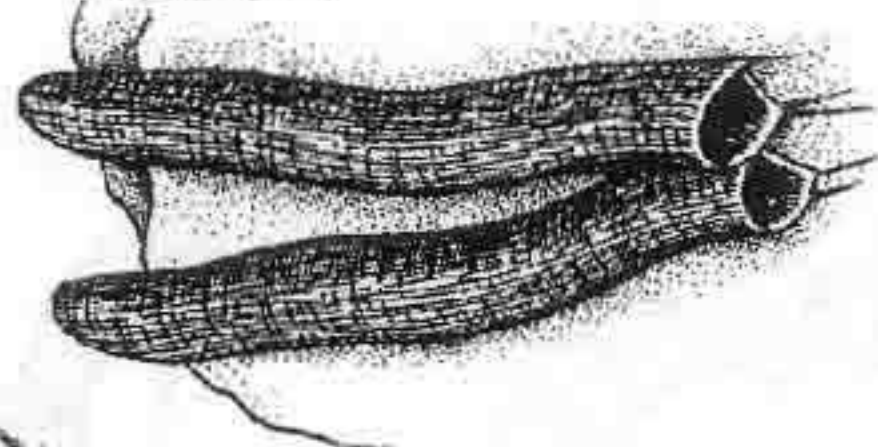
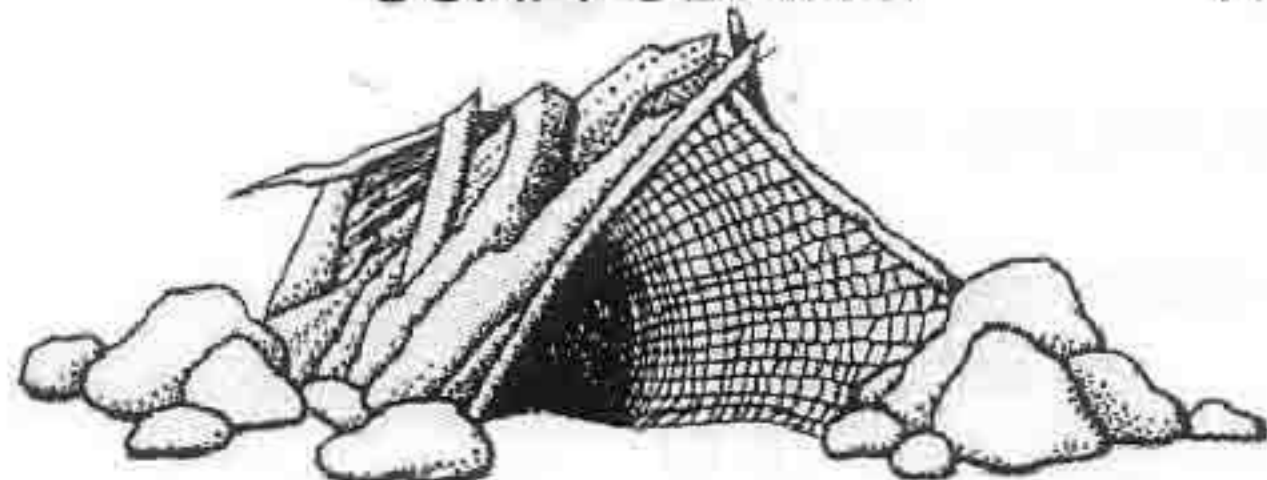
FIRST LEVEL OF RESOLUTION

LARVAE WITH FIXED RETREAT AND CAPTURE NET

Note: Care must be taken when collecting to observe nets.

Caddisflies (Order Trichoptera)

True Flies (Order Diptera)

COARSE NET IN
"SCAFFOLDING"FLATTENED SOCKLIKE OR
TRUMPET-SHAPED NET OF FINE
MESHTUBE WITH SILK STRANDS STRUNG
BETWEEN TERMINAL PRONGS

True Midges (Family Chironomidae)

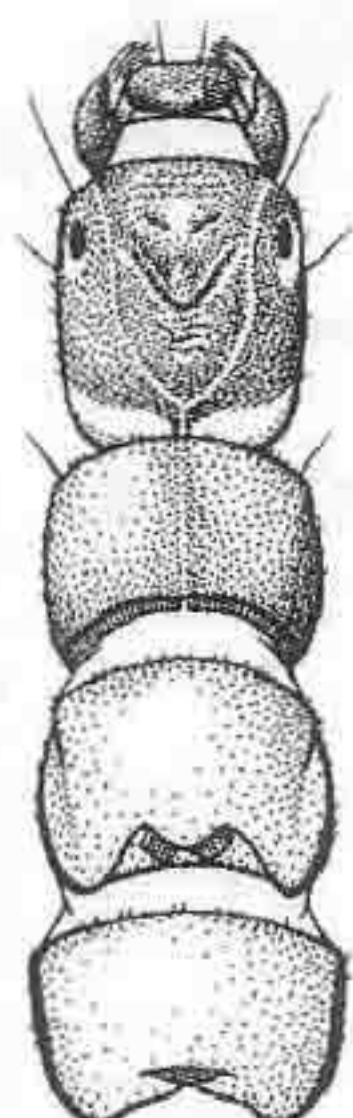
Families Hydropsychidae, Philopotamidae, Polycentropodidae

FILTERING COLLECTORS

SECOND LEVEL OF RESOLUTION separates from free-living larvae those net-spinning caddisflies that may have been inadvertently collected without being associated with their nets.

NET-SPINNING CADDISFLIES

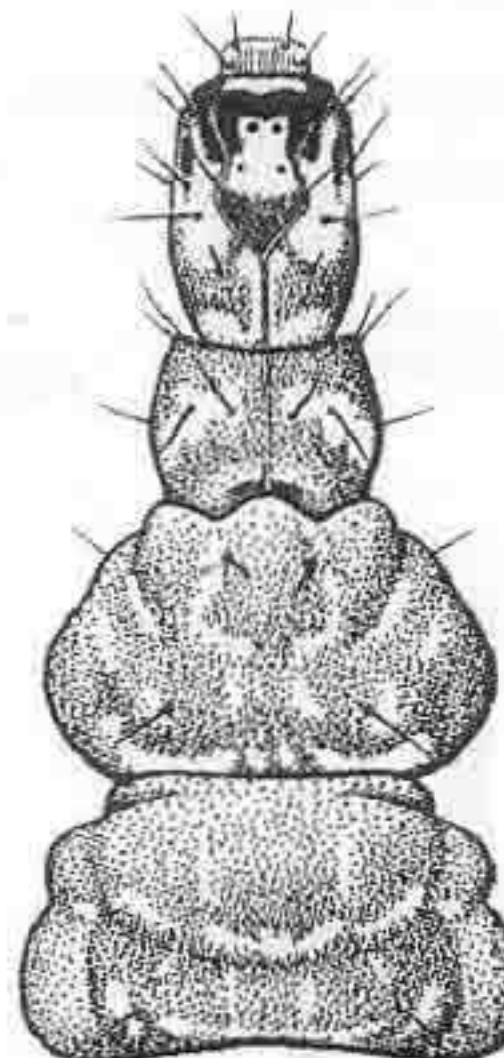
Frequently separated from their nets

HEAD AS WIDE AS THORAX
Especially Philopotamidae (bright
yellow) and Hydropsychidae (bright
green or brown)

FILTERING COLLECTORS

FREE-LIVING CADDISFLIES

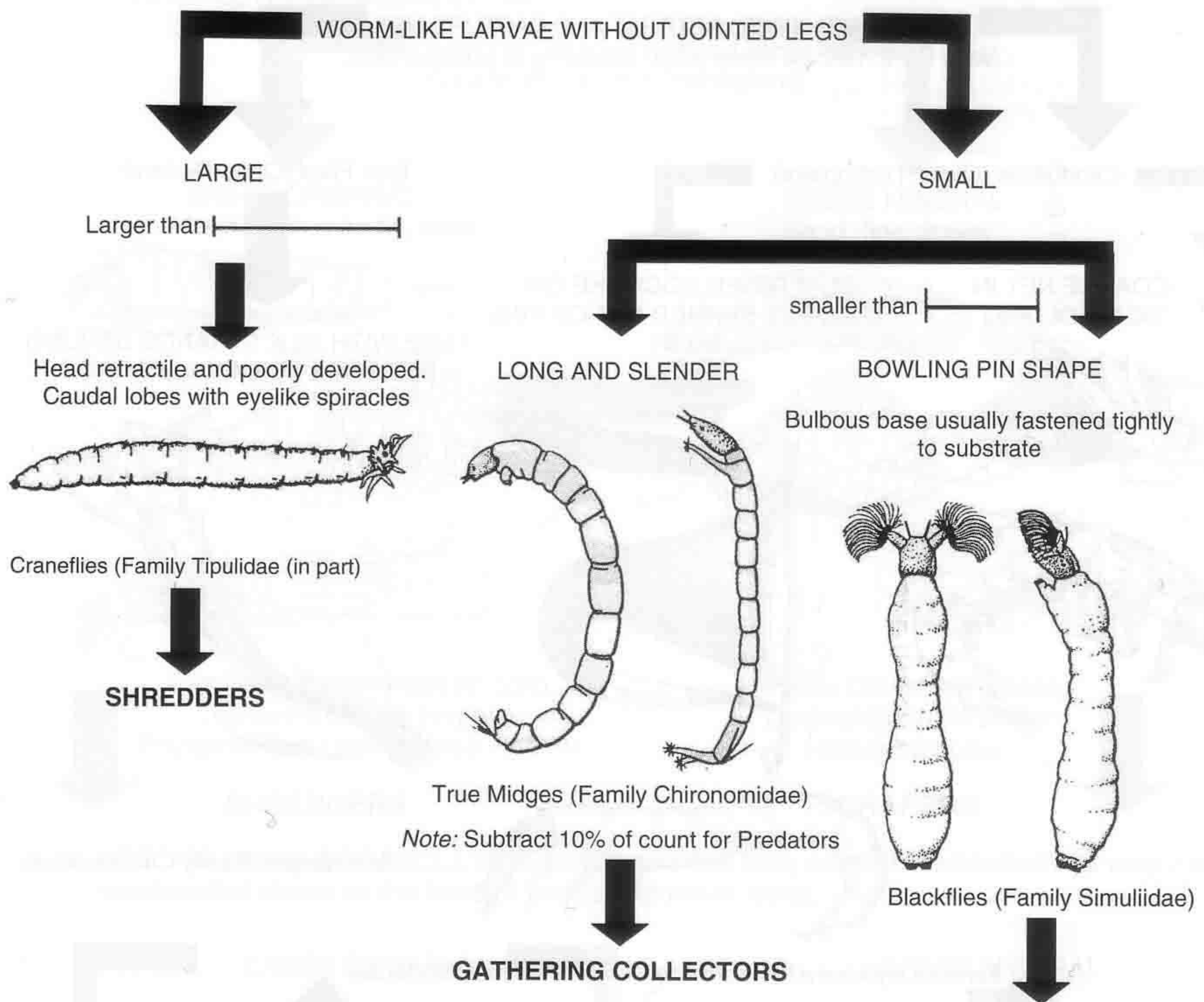
Non net-spinning

HEAD LONG, SMALL,
AND NARROWER THAN
THORAXRhyacophilidae (often
bright green)

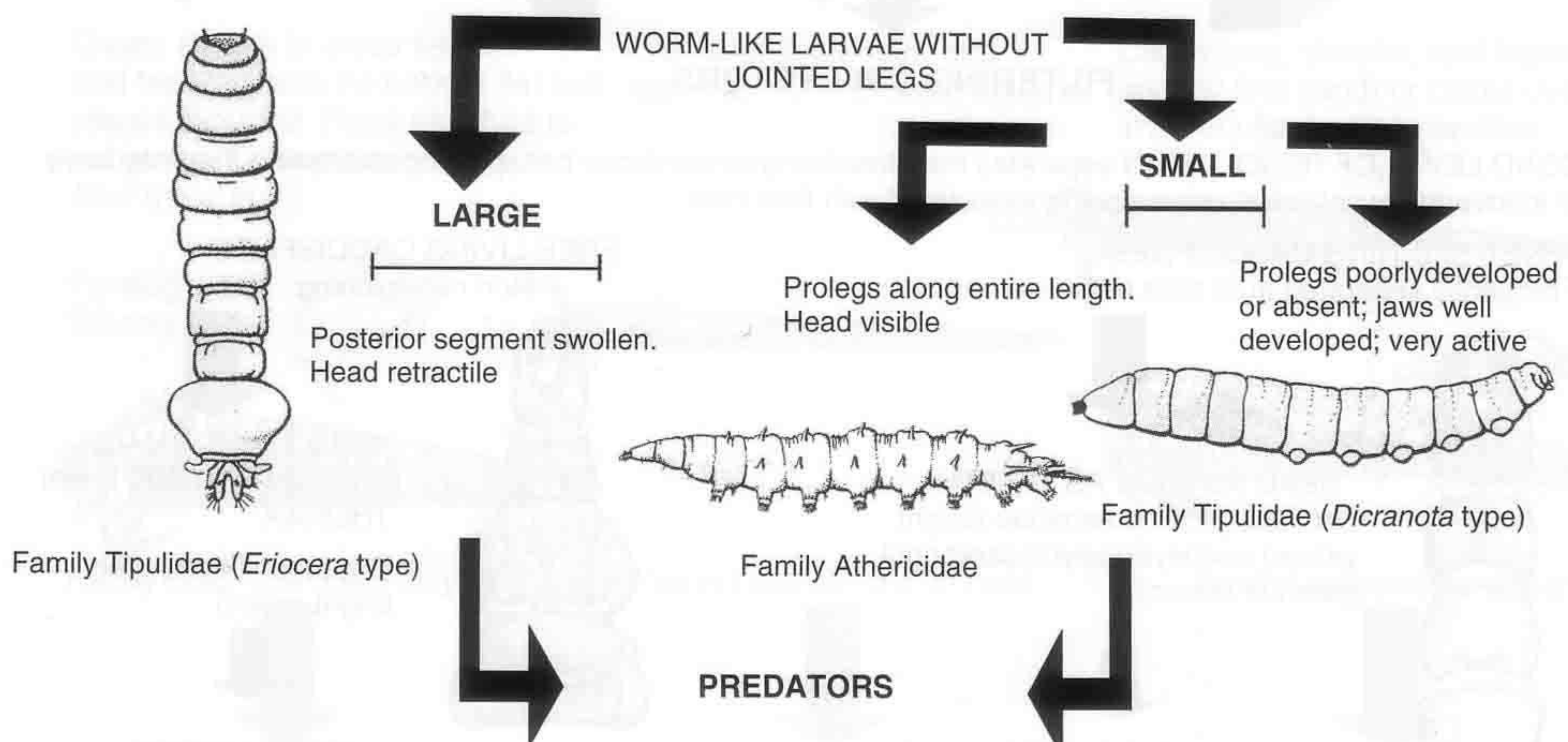
PREDATORS

KEY 4

FIRST LEVEL OF RESOLUTION

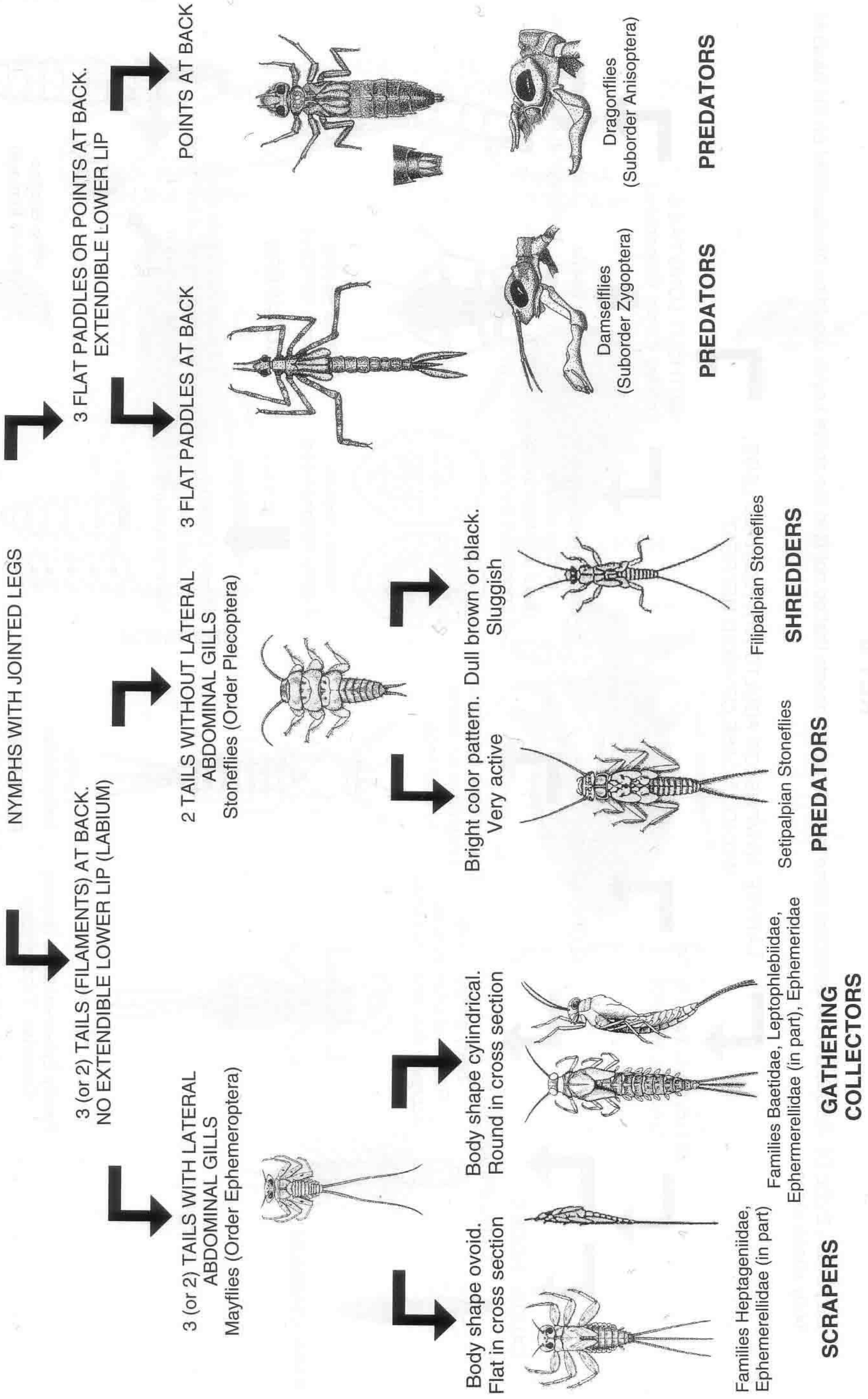


SECOND LEVEL OF RESOLUTION considers some wormlike Predators that would be misclassified in the above key.



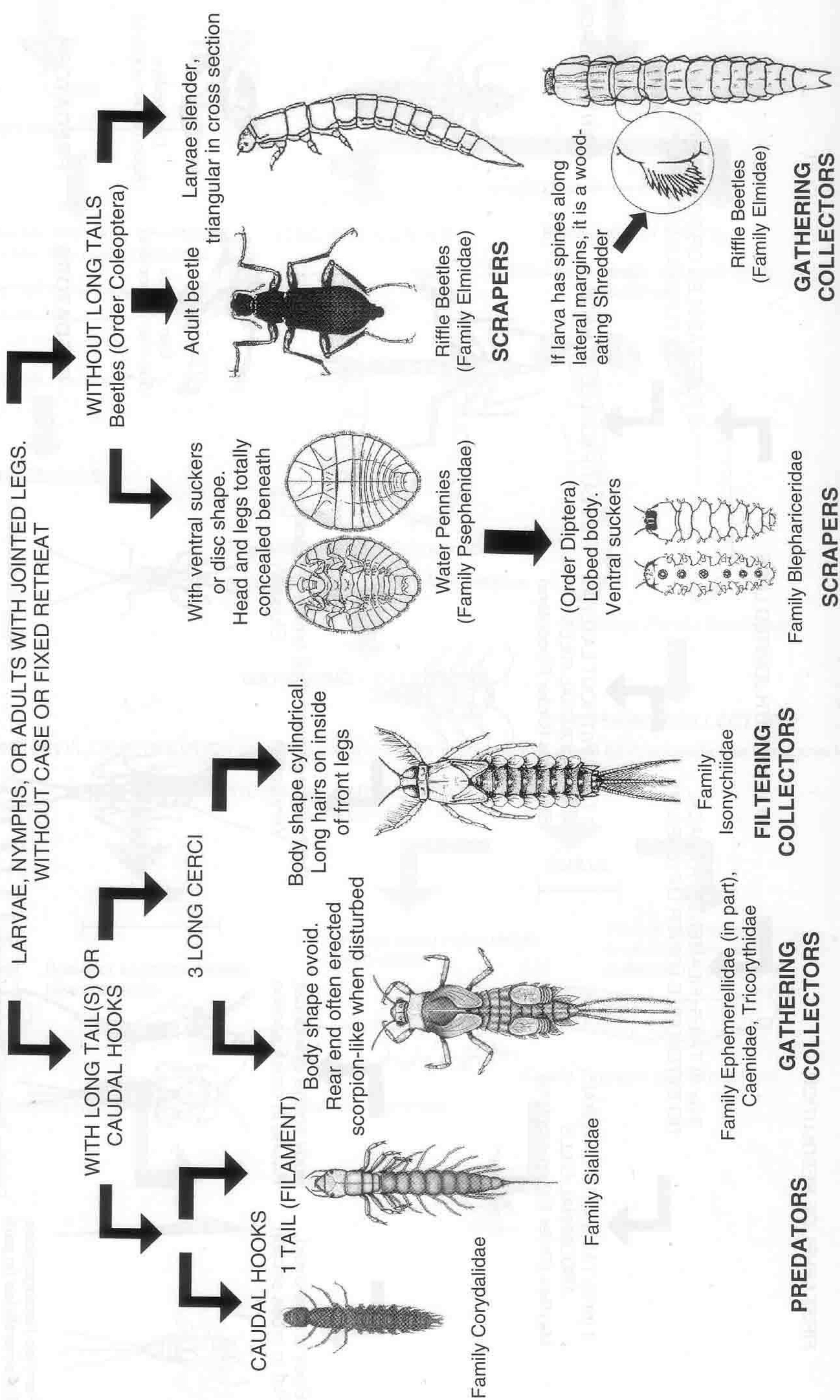
KEY 5

FIRST LEVEL OF RESOLUTION



KEY 6

SECOND LEVEL OF RESOLUTION considers some fairly common insects that do not fit in the above key or would be misclassified on the basis of body shape alone.



KEY 7

SECOND LEVEL OF RESOLUTION considers some fairly common insects that do not fit in the above key or would be misclassified on the basis of body shape alone.

